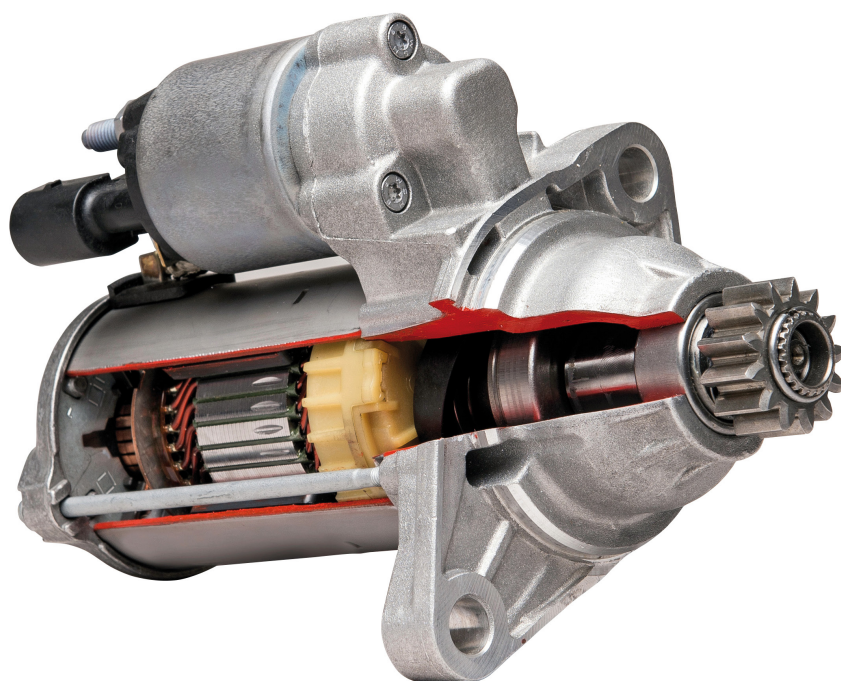


ashika[®]

**STARTERS
MOTORINI
AVVIAMENTO**



www.ashika.eu

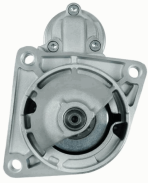
CATALOGUE
FOR CARS AND COMMERCIAL
VEHICLES

CATALOGO
PER AUTOMOBILI E VEICOLI
COMMERCIALI

Electrics

MT-101JM

Starter



ALFA ROMEO 145 (930)
ALFA ROMEO 146 (930)
ALFA ROMEO 147 (937)
ALFA ROMEO 156 (932)
ALFA ROMEO 156 Sportwagon (932)
ALFA ROMEO 159 (939)

OE
1202282
3110079J00
3110079J00000
31100H79J00
31100H79J00000
31100T79J00

Clamp: Pin "30" M8 B+
Clamp: Pin "50" M6
Flange [mm]: 81,5
Number of mounting bores: 3
Number of Teeth: 9
Number of Thread Bores: 0
Rated Power [kW]: 2
Rotation Direction: Clockwise rotation
Voltage [V]: 12

MT-102JM

Starter



ALFA ROMEO MITO (955)
CITROEN NEMO Station wagon
FIAT 500 (312)
FIAT 500 C (312)
FIAT DOBLO (119)
FIAT FIORINO MPV / Space wagon (225_)

OE
09115193
1202265
1202499
1571299
1637179980
1726349

Clamp: M8 B+
Flange [mm]: 64
Number of mounting bores: 2
Number of Teeth: 9
Number of Thread Bores: 1
Rated Power [kW]: 1,3
Rotation Direction: Clockwise rotation
Voltage [V]: 12

MT-103JM

Starter



ABARTH 124 Spider (348_)
ABARTH 500 (312)
ABARTH 500C (312)
ABARTH PUNTO EVO (199)
ALFA ROMEO GIULIETTA (940)
ALFA ROMEO MITO (955)

OE
1202291
1202503
136908
1542468
1567033
1726802

Clamp: M8 B+
Flange [mm]: 64
Number of mounting bores: 3
Number of Teeth: 10
Number of Teeth: 8
Number of Teeth: 9
Number of Thread Bores: 1
Rated Power [kW]: 1
Rotation Direction: Clockwise rotation
Voltage [V]: 12

MT-104JM

Starter



FIAT PALIO (178BX)
FIAT PALIO Weekend (178DX)
FIAT PUNTO (188)
FIAT SEICENTO (187)
FIAT SIENA (178_)
LANCIA Y (840A)

OE
136910
2506910
46429594
46473785
46518059
46548653

Clamp: M8, Pin "50" M6
Flange [mm]: 64
Number of mounting bores: 3
Number of Teeth: 10
Number of Teeth: 8
Number of Teeth: 9
Number of Thread Bores: 1
Rated Power [kW]: 0,8
Rotation Direction: Clockwise rotation
Voltage [V]: 12

MT-105JM

Starter



DACIA LOGAN (LS_)
DACIA LOGAN II
DACIA LOGAN MCV (KS_)
DACIA LOGAN MCV II
DACIA LOGAN Pick-up (US_)
DACIA SANDERO

OE
2330000Q0F
2330000Q1H
2330000Q1M
2330000Q2C
2330000Q6L
2330000QA0

Clamp: M8 B+, Pin "50" Plug
Flange [mm]: 63
Number of mounting bores: 3
Number of Teeth: 10
Number of Teeth: 12
Number of Teeth: 13
Number of Thread Bores: 3
Rated Power [kW]: 1,4
Rotation Direction: Clockwise rotation
Voltage [V]: 12

Electrics

MT-106JM

Starter



IVECO MASSIF Pick-up
IVECO MASSIF Station Wagon

OE
1516689R
2994100
2995990
2997002
42498717
500059592

Clamp: M8, Pin "50" M6
Flange [mm]: 81,5
Number of mounting bores: 3
Number of Teeth: 9
Number of Thread Bores: 3
Rated Power [kW]: 2,3
Rotation Direction: Clockwise rotation
Voltage [V]: 12

MT-107JM

Starter



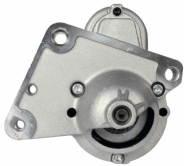
FORD FIESTA V (JH_, JD_)
FORD FIESTA VI
FORD FUSION (JU_)
MAZDA 2 (DY)

OE
1140757
1144505
1350459
1366195
1368974
1483817

Clamp: M8, Pin "50" M6
Number of mounting bores: 3
Number of Teeth: 12
Number of Thread Bores: 2
Rated Power [kW]: 1,4
Rotation Direction: Clockwise rotation
Voltage [V]: 12

MT-108JM

Starter



CITROEN BERLINGO (B9)
CITROEN BERLINGO (K9)
CITROEN BERLINGO (MF)
CITROEN C-ELYSEE
CITROEN C1 (PM_, PN_)
CITROEN C2 (JM_)

OE
1213257
1638115880
28100YV010
28100YV011
3640319
5802A2

Clamp: Pin "30" M8 B+
Clamp: Pin "50" M5
Number of mounting bores: 4
Number of Teeth: 11
Number of Teeth: 12
Number of Thread Bores: 2
Rated Power [kW]: 1,4
Rotation Direction: Clockwise rotation
Voltage [V]: 12

MT-109JM

Starter



CITROEN JUMPER Autobus
CITROEN JUMPER Autobus (230P)
CITROEN JUMPER Autobus (244, Z_)
CITROEN JUMPER Furgonato
CITROEN JUMPER Furgonato (230L)
CITROEN JUMPER Furgonato (244)

OE
130019808
130019808
131955508
1329201080
1349920080
1516685R

Clamp: M8, Pin "50" M6
Flange [mm]: 81,5
Number of mounting bores: 3
Number of Teeth: 9
Number of Thread Bores: 3
Rated Power [kW]: 2,5
Rotation Direction: Clockwise rotation
Voltage [V]: 12

MT-110JM

Starter



CITROEN JUMPER Autobus (230P)
CITROEN JUMPER Autobus (244, Z_)
CITROEN JUMPER Furgonato (230L)
CITROEN JUMPER Furgonato (244)
CITROEN JUMPER Pianale piatto/Telaio (230)
CITROEN JUMPER Pianale piatto/Telaio (244)

OE
1319555080
1331329080
134705808
1347058080
134705880
1524014R

Clamp: M8
Flange [mm]: 82
Number of mounting bores: 3
Number of Teeth: 9
Number of Thread Bores: 3
Rated Power [kW]: 2,5
Rotation Direction: Clockwise rotation
Voltage [V]: 12

Electrics

MT-111JM

Starter



CITROEN BERLINGO (MF)
CITROEN BX (XB-_)
CITROEN BX Break (XB-_)
CITROEN C-CROSSER (EP_)
CITROEN C15 Station wagon
CITROEN C4 Coupé (LA_)

OE

1320921080
1332419080
1502453001E
151412580
1516680R
1516741R

Clamp: Pin "30" M8 B+
Clamp: Pin "50" M5
Number of mounting bores: 3
Number of Teeth: 11
Number of Thread Bores: 2
Rated Power [kW]: 1,9
Rotation Direction: Clockwise rotation
Voltage [V]: 12

MT-112JM

Starter



CITROEN BERLINGO (MF)
CITROEN BX (XB-_)
CITROEN BX Break (XB-_)
CITROEN C-CROSSER (EP_)
CITROEN C15 Station wagon
CITROEN C4 Coupé (LA_)

OE

1005831356
1319121080
1342792080
1516776R
1516779R
1810A101

Clamp: M8, Pin "50" M5
Flange [mm]: 66
Number of mounting bores: 3
Number of Teeth: 10
Number of Teeth: 11
Number of Teeth: 12
Number of Teeth: 13
Number of Thread Bores: 3
Rated Power [kW]: 1,4
Rotation Direction: Clockwise rotation
Voltage [V]: 12

MT-113JM

Starter



MERCEDES-BENZ CLASSE C (W202)
MERCEDES-BENZ CLASSE C (W203)
MERCEDES-BENZ CLASSE C Coupe (CL203)
MERCEDES-BENZ CLASSE C Station wagon (S202)
MERCEDES-BENZ CLASSE C T-Model (S203)

OE

0031515001
003151500180
0041512101
0041513001
0041513901
0041514501

Clamp: M8
Flange [mm]: 82,5
Number of mounting bores: 2
Number of Teeth: 10
Number of Thread Bores: 2
Rated Power [kW]: 2
Rotation Direction: Clockwise rotation
Voltage [V]: 12

MT-114JM

Starter



FORD FIESTA IV (JA_, JB_)
FORD FOCUS (DAW, DBW)
FORD FOCUS Station wagon (DNW)
FORD FOCUS Tre volumi (DFW)
FORD PUMA (EC_)
MAZDA 121 III (JASM, JBSM)

OE

0018882
1004565
1004566
1011330
1011331
1018882

Clamp: Pin "50" M6
Flange [mm]: 76
Number of mounting bores: 3
Number of Teeth: 10
Number of Thread Bores: 3
Rated Power [kW]: 1,1
Rotation Direction: Clockwise rotation
Voltage [V]: 12

MT-115JM

Starter



CITROEN AX (ZA-_)
CITROEN BERLINGO (B9)
CITROEN BERLINGO (MF)
CITROEN C-ELYSEE
CITROEN C2 (JM_)
CITROEN C3 I (FC_)

OE

580200000000
5802CR
5802E9
5802ER
5802F3
5802Q3

Clamp: M8, Pin "50" M5
Number of mounting bores: 3
Number of Teeth: 9
Number of Thread Bores: 1
Rated Power [kW]: 0,9
Rotation Direction: Clockwise rotation
Voltage [V]: 12

Electrics

MT-116JM

Starter



ALFA ROMEO 159 (939)
ALFA ROMEO 159 Sportwagon (939)
ALFA ROMEO BRERA
ALFA ROMEO SPIDER (939)
CHRYSLER DELTA
FIAT BRAVO II (198)

OE

0001Y03631
00K68080459AA
3110055L00
3110055L00000
3110055L01
31100T55L00

Clamp: M8 B+, Pin "50" M6
Flange [mm]: 76
Number of mounting bores: 3
Number of Teeth: 10
Number of Teeth: 11
Number of Thread Bores: 0
Rated Power [kW]: 1,4
Rotation Direction: Clockwise rotation
Voltage [V]: 12

MT-117JM

Starter



FIAT PALIO (178BX)
FIAT PALIO Weekend (178DX)
FIAT PANDA (141A_)
FIAT PUNTO (188)
FIAT SEICENTO (187)
FIAT SIENA (178_)

OE

46432262
46465475
46758241
46763530
46765839
46796553

Clamp: M8, Pin "50" M6
Flange [mm]: 64
Number of mounting bores: 3
Number of Teeth: 9
Number of Thread Bores: 2
Rated Power [kW]: 0,8
Rotation Direction: Clockwise rotation
Voltage [V]: 12

MT-118JM

Starter



LAND ROVER DEFENDER Cabrio (LD)
LAND ROVER DEFENDER Pick-up (LD_)
LAND ROVER DEFENDER Station Wagon (LD)

OE

1372739
1375378
1385378
1574338
1606413580
1669558

Clamp: Pin "30" M8 B+
Clamp: Pin "50" M6
Flange [mm]: 89
Number of mounting bores: 2
Number of Teeth: 12
Number of Thread Bores: 0
Rated Power [kW]: 2
Rotation Direction: Clockwise rotation
Voltage [V]: 12

MT-119JM

Starter



FORD C-MAX (DM2)
FORD C-MAX II
FORD FOCUS C-MAX
FORD FOCUS II (DA_)
FORD FOCUS II Station wagon (DA_)
FORD FOCUS II Tre volumi (DA_)

OE

1229427
1233234
1254222
1368970
1469712
1707507

Clamp: Pin "30" M8 B+
Clamp: Pin "50" M6
Number of mounting bores: 3
Number of Teeth: 11
Number of Thread Bores: 2
Rated Power [kW]: 1,2
Rotation Direction: Clockwise rotation
Voltage [V]: 12

MT-120JM

Starter



AUDI A1 (8X1, 8XF)
AUDI A1 Sportback (8XA, 8XK)
AUDI A3 (8P1)
AUDI A3 Cabriolet (8P7)
AUDI A3 Sportback (8PA)
AUDI Q3 (8U)

OE

02M911023N
02M911023NX
02M911023P
02M911023PX
02M911024
02M911024A

Clamp: Pin "50" Plug
Flange [mm]: 76
Number of mounting bores: 2
Number of Teeth: 11
Number of Teeth: 12
Number of Thread Bores: 0
Rated Power [kW]: 2
Rotation Direction: Anti-clockwise rotation
Voltage [V]: 12

Electrics

MT-121JM

Starter



FORD ESCORT CLASSIC (AAL, ABL)
 FORD ESCORT V (GAL)
 FORD ESCORT V Station wagon (GAL, AVL)
 FORD ESCORT VI (GAL)
 FORD ESCORT VI Station wagon (GAL)
 FORD ESCORT VI Tre volumi (GAL)

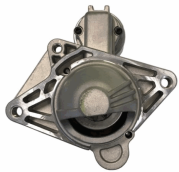
OE

1008813
 1008835
 1027300
 1058429
 1061267
 1061627

Clamp: M8, Pin "50" M6
 Flange [mm]: 76
 Number of mounting bores: 3
 Number of Teeth: 10
 Number of Thread Bores: 3
 Rated Power [kW]: 2,2
 Rotation Direction: Clockwise rotation
 Voltage [V]: 12

MT-122JM

Starter



MERCEDES-BENZ CLASSE X (470)
 NISSAN NAVARA Pick-up (D23)
 NISSAN QASHQAI / QASHQAI +2 (J10, JJ10)
 NISSAN X-TRAIL (T31)
 RENAULT ALASKAN
 RENAULT ESPACE IV (JK0/1_)

OE

1202193
 1202204
 1202395
 2330000Q0A
 2330000Q0D
 2330000Q1E

Clamp: Pin "30" M8 B+
 Clamp: Pin "50" M5
 Flange [mm]: 76
 Number of mounting bores: 3
 Number of Teeth: 10
 Number of Teeth: 11
 Number of Thread Bores: 0
 Rated Power [kW]: 2,2
 Rotation Direction: Clockwise rotation
 Voltage [V]: 12

MT-123JM

Starter



HYUNDAI GALLOPER II (JK-01)
 HYUNDAI TERRACAN (HP)
 MITSUBISHI GALANT VI (EA_)
 MITSUBISHI GALANT VI Station wagon (EA_)
 MITSUBISHI L 200 (K7_T, K6_T)
 MITSUBISHI LANCER V (CB/D_A)

OE

23300FY500
 3610042250
 3610042350
 3610042450
 M002T84170
 M002T84171

Clamp: M10
 Flange [mm]: 77
 Number of mounting bores: 2
 Number of Teeth: 12
 Number of Thread Bores: 2
 Rated Power [kW]: 2,2
 Rotation Direction: Clockwise rotation
 Voltage [V]: 12

MT-124JM

Starter



CITROEN C1 (PM_, PN_)
 CITROEN C1 II
 PEUGEOT 107
 PEUGEOT 108
 TOYOTA AYGO (PAB4_, KGB4_)
 TOYOTA AYGO (WNB1_, KGB1_)

OE

1612092980
 1612350580
 281000Q012
 281000Q012D
 281000Q021
 281000Q030

Clamp: Pin "30" M8 B+
 Clamp: Pin "50" M5
 Flange [mm]: 74
 Number of mounting bores: 2
 Number of Teeth: 8
 Number of Thread Bores: 1
 Rated Power [kW]: 1,1
 Rotation Direction: Clockwise rotation
 Voltage [V]: 12

MT-125JM

Starter



FIAT CINQUECENTO (170)
 FIAT PANDA (141A_)
 FIAT SEICENTO (187)
 FIAT UNO (146A/E)
 LANCIA A 112
 SEAT FURA (025A)

OE

0003914191
 0003974104
 3914191
 3915113
 3974104
 4229113

Clamp: M8
 Flange [mm]: 62
 Number of mounting bores: 3
 Number of Teeth: 9
 Number of Thread Bores: 3
 Rated Power [kW]: 0,8
 Rotation Direction: Clockwise rotation
 Voltage [V]: 12

Electrics

MT-126JM

Starter



CITROEN BERLINGO (B9)
CITROEN C1 (PM_, PN_)
CITROEN C2 (JM_)
CITROEN C3 I (FC_)
CITROEN C3 II
CITROEN C3 III (SX)

OE
28100YV020
3647959
5645100680
5802AA
5802EG
5802Z8

Clamp: M8
Number of mounting bores: 3
Number of Teeth: 12
Number of Thread Bores: 2
Rated Power [kW]: 1,5
Rotation Direction: Clockwise rotation
Voltage [V]: 12

MT-127JM

Starter



AUDI A3 (8P1)
AUDI A3 Cabriolet (8P7)
AUDI A3 Sportback (8PA)
SEAT ALTEA (5P1)
SEAT ALTEA XL (5P5, 5P8)
SEAT CORDOBA (6L2)

OE
02Z911023F
02Z911023FX
02Z911023H
02Z911023HX
02Z911024J
2Z911023F

Clamp: Pin "30" M8 B+
Clamp: Pin "50" Plug
Flange [mm]: 76
Number of mounting bores: 3
Number of Teeth: 10
Number of Thread Bores: 0
Rated Power [kW]: 2
Rotation Direction: Anti-clockwise rotation
Voltage [V]: 12

MT-128JM

Starter



CHEVROLET CORSA Pick-up
CHEVROLET CORSA Station wagon
CHEVROLET CORSA Tre volumi
CHEVROLET TRAX
HONDA CIVIC VII Hatchback (EU, EP, EV)
OPEL ASTRA CLASSIC (L48)

OE
1202591
136934
2506934
31200PLZD00
6202000
6202043

Clamp: Pin "30" M8 B+
Clamp: Pin "50" M4
Flange [mm]: 78
Number of mounting bores: 2
Number of Teeth: 13
Number of Thread Bores: 1
Rated Power [kW]: 1,4
Rotation Direction: Clockwise rotation
Voltage [V]: 12

MT-129JM

Starter



FORD C-MAX (DM2)
FORD FOCUS C-MAX
FORD FOCUS II (DA_)
FORD FOCUS II Cabriolet
FORD FOCUS II Station wagon (DA_)
FORD FOCUS II Tre volumi (DA_)

OE
1427763
1476606
1529431
1904993
4M5T11000FA
6G9N11000GA

Clamp: M8 B+
Flange [mm]: 63
Number of mounting bores: 3
Number of Teeth: 11
Number of Thread Bores: 3
Rated Power [kW]: 2,2
Rotation Direction: Clockwise rotation
Voltage [V]: 12

MT-130JM

Starter



BMW 02 (E10)
BMW 02 Cabriolet (E10)
BMW 02 Touring (E6)
BMW 1500-2000 (115, 116, 118, 121)
BMW 1600 GT Coupe
BMW 2000-3.2 Coupe (E9)

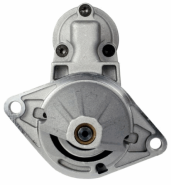
OE
1005821194
12411308543
12411312104
12411312130
1312104
1312130

Clamp: M8, Pin "50" M6
Flange [mm]: 76
Number of mounting bores: 2
Number of Teeth: 9
Number of Thread Bores: 0
Rated Power [kW]: 1,7
Rotation Direction: Clockwise rotation
Voltage [V]: 12

Electrics

MT-131JM

Starter



DAEWOO LACETTI 2 volumi /Coda spiovente (KLAN)
FIAT STILO (192)
FIAT STILO Multi Wagon (192)
OPEL AGILA (A) (H00)
OPEL COMBO Tour

OE
55351508
55351608

Clamp: M8, Pin "50" M6
Flange [mm]: 68
Number of mounting bores: 2
Number of Teeth: 9
Number of Thread Bores: 0
Rated Power [kW]: 1,1
Rotation Direction: Clockwise rotation
Voltage [V]: 12

MT-132JM

Starter



HYUNDAI GALLOPER I
HYUNDAI GALLOPER II (JK-01)
HYUNDAI TERRACAN (HP)
MITSUBISHI GALANT II Station Wagon (A16_V)
MITSUBISHI GALANT IV (A16_)
MITSUBISHI GALANT V (E5_A, E7_A, E8_A)

OE
1516954R
3610042050
3610047600
3610047650
HK988300
HQ808670

Clamp: M8 B+
Flange [mm]: 77
Number of mounting bores: 2
Number of Teeth: 13
Number of Thread Bores: 2
Rated Power [kW]: 2,2
Rotation Direction: Clockwise rotation
Voltage [V]: 12

MT-133JM

Starter



CARBODIES TX1
FORD MAVERICK (UDS, UNS)
NISSAN NAVARA (D21)
NISSAN NAVARA (D22)
NISSAN PATHFINDER (R50)
NISSAN PICK UP (D21)

OE
1516934R
2330002N00
2330010T01
2330010T02
233001W400
233001W40A

Clamp: M8
Flange [mm]: 95
Number of mounting bores: 2
Number of Teeth: 9
Number of Thread Bores: 0
Rated Power [kW]: 2,5
Rotation Direction: Clockwise rotation
Voltage [V]: 12

MT-134JM

Starter



FIAT DOBLO (119)
LANCIA YPSILON (843)
OPEL AGILA (A) (H00)
OPEL AGILA (B) (H08)
OPEL ASTRA CLASSIC (L48)
OPEL ASTRA H (L48)

OE
3110084EC0
3110085E00
31100M86J01
33353237
55217673
55353237

Clamp: Pin "30" M8 B+
Clamp: Pin "50" M6
Flange [mm]: 64
Number of mounting bores: 2
Number of Teeth: 8
Number of Teeth: 9
Number of Thread Bores: 1
Rated Power [kW]: 1,1
Rotation Direction: Clockwise rotation
Voltage [V]: 12

MT-135JM

Starter



TOYOTA YARIS (SCP1_, NLP1_, NCP1_)

OE
2280009540
281000J010
281000J020
281000J030
281000J031
281000J050

Clamp: Pin "50" Plug
Flange [mm]: 74
Number of mounting bores: 2
Number of Teeth: 8
Number of Thread Bores: 1
Rated Power [kW]: 1,2
Rotation Direction: Clockwise rotation
Voltage [V]: 12

Electrics

MT-136JM

Starter



IVECO DAILY I Autobus
IVECO DAILY I Cassone / Furgonato / Promiscuo
IVECO DAILY I Pianale piatto/Telaio
IVECO DAILY I Ribaltabile
IVECO DAILY II Cassone / Furgonato / Promiscuo

OE
004719664
106055
1516663R
1516714R
1516792R
2995140

Clamp: M8
Flange [mm]: 110
Number of mounting bores: 3
Number of Teeth: 9
Number of Thread Bores: 1
Rated Power [kW]: 2,2
Rotation Direction: Clockwise rotation
Voltage [V]: 12

MT-137JM

Starter



AUTOBIANCHI Y10
FIAT PANDA (141A_)
FIAT TIPO (160)
FIAT UNO (146A/E)
LANCIA Y10 (156)

OE
46231510
46402984
5999906
7539303
7612952
7621040

Clamp: M8
Flange [mm]: 64
Number of mounting bores: 3
Number of Teeth: 9
Number of Thread Bores: 1
Rated Power [kW]: 0,8
Rotation Direction: Clockwise rotation
Voltage [V]: 12

MT-138JM

Starter



CHEVROLET AVEO 2 volumi /Coda spiovente (T200)
CHEVROLET AVEO 2 volumi /Coda spiovente (T250, T255)
CHEVROLET AVEO Tre volumi (T200)
CHEVROLET AVEO Tre volumi (T250, T255)

OE
09000700
09000756
09117031
09130838
09133598
09163856

Clamp: M8, Pin "50" M6
Flange [mm]: 68
Number of mounting bores: 2
Number of Teeth: 10
Number of Thread Bores: 0
Rated Power [kW]: 1,3
Rotation Direction: Clockwise rotation
Voltage [V]: 12

MT-139JM

Starter



DACIA LOGAN (LS_)
DACIA LOGAN II
DACIA LOGAN MCV II
DACIA SANDERO
DACIA SANDERO II
RENAULT CLIO Grandtour (KR0/1_)

OE
2330000QAM
2330000QAY
5802X6
7700864608
7700865213
7700867838

Clamp: M8
Flange [mm]: 63,5
Number of mounting bores: 3
Number of Teeth: 9
Number of Thread Bores: 1
Rated Power [kW]: 0,9
Rotation Direction: Clockwise rotation
Voltage [V]: 12

MT-140JM

Starter



TOYOTA AURIS (NRE15_, ZZE15_, ADE15_, ZRE15_, NDE15_)
TOYOTA YARIS (SCP9_, NSP9_, KSP9_, NCP9_, ZSP9_)

OE
281000N010

Clamp: Pin "50" Plug
Flange [mm]: 74
Number of mounting bores: 2
Number of Teeth: 9
Number of Thread Bores: 1
Rated Power [kW]: 1,1
Rotation Direction: Clockwise rotation
Voltage [V]: 12

Electrics

MT-141JM

Starter



LEXUS IS II (GSE2_, ALE2_, USE2_)
 TOYOTA AURIS (NRE15_, ZZE15_, ADE15_,
 ZRE15_, NDE15_)
 TOYOTA AURIS (NZE18_, ZRE18_)
 TOYOTA AURIS TOURING SPORTS (ADE18_,
 ZWE18_, ZRE18_)

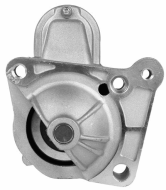
OE

281000G040
 281000R010
 281000R01084
 281000R030
 281000R03084
 281000R060

Clamp: Pin "30" M8 B+
 Clamp: Pin "50" Plug
 Flange [mm]: 74
 Number of mounting bores: 2
 Number of Teeth: 9
 Number of Thread Bores: 2
 Rated Power [kW]: 2
 Rotation Direction: Clockwise rotation
 Voltage [V]: 12

MT-142JM

Starter



MITSUBISHI CARISMA (DA_)
 MITSUBISHI CARISMA Tre volumi (DA_)
 MITSUBISHI SPACE STAR (DG_A)
 NISSAN PRIMERA (P12)
 NISSAN PRIMERA Hatchback (P12)
 NISSAN PRIMERA Station wagon (WP12)

OE

1810A048
 2330000Q0E
 2330000QAC
 2330000QAE
 23300AW300
 23300AW302

Clamp: Pin "30" M8 B+
 Clamp: Pin "50" M5
 Number of mounting bores: 4
 Number of Teeth: 11
 Number of Thread Bores: 3
 Rated Power [kW]: 2,1
 Rotation Direction: Clockwise rotation
 Voltage [V]: 12

MT-143JM

Starter



MERCEDES-BENZ CLASSE A (W168)
 MERCEDES-BENZ Vaneo (414)

OE

0051511601
 005151160180
 0051517401
 005151740180
 A0051511601
 A005151160180

Clamp: M8, Pin "50" M6
 Flange [mm]: 70
 Number of mounting bores: 2
 Number of Teeth: 10
 Number of Thread Bores: 0
 Rated Power [kW]: 1,7
 Rotation Direction: Clockwise rotation
 Voltage [V]: 12

MT-144JM

Starter



OPEL ASTRA GTC J
 OPEL ASTRA J
 OPEL ASTRA J Sports Tourer
 OPEL ASTRA J Tre volumi
 OPEL CORSA D
 OPEL MERIVA B

OE

1202110
 1202281
 1202421
 55566800
 55568572
 95520115

Clamp: Pin "50" M6
 Flange [mm]: 68
 Number of mounting bores: 2
 Number of Teeth: 9
 Number of Thread Bores: 0
 Rated Power [kW]: 1,1
 Rotation Direction: Clockwise rotation
 Voltage [V]: 12

MT-145JM

Starter



CITROEN BERLINGO (B9)
 CITROEN BERLINGO (K9)
 CITROEN BERLINGO (MF)
 CITROEN C-ELYSEE
 CITROEN C2 (JM_)
 CITROEN C3 AIRCROSS II

OE

12417794971
 12417805098
 1638116880
 3110069K00
 3640318
 5802AE

Clamp: Pin "50" M5
 Number of mounting bores: 4
 Number of Teeth: 11
 Number of Thread Bores: 2
 Rated Power [kW]: 2,2
 Rotation Direction: Clockwise rotation
 Voltage [V]: 12

Electrics

MT-146JM

Starter



AUDI A2 (8Z0)
AUDI A3 (8L1)
FORD GALAXY (WGR)
SEAT ALHAMBRA (7V8, 7V9)
SEAT AROSA (6H)
SEAT CORDOBA (6K1, 6K2)

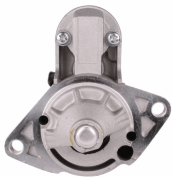
OE

02A911023G
02A911023GX
02A911023J
02A911023JX
02A911023R
02A911023RX

Clamp: M8
Flange [mm]: 76
Number of mounting bores: 2
Number of Teeth: 10
Number of Thread Bores: 0
Rated Power [kW]: 1,8
Rotation Direction: Anti-clockwise rotation
Voltage [V]: 12

MT-147JM

Starter



SUZUKI JIMNY (FJ)
SUZUKI JIMNY Fuoristrada aperto (SN)
SUZUKI SAMURAI (SJ)
SUZUKI SAMURAI Fuoristrada aperto (SJ)
SUZUKI SJ 413
SUZUKI VITARA (ET, TA)

OE

1A5118400
3100083021
3110060A10
3110060A10000
3110060A11
3110060A12

Clamp: M8
Flange [mm]: 66
Number of mounting bores: 2
Number of Teeth: 8
Number of Teeth: 9
Number of Thread Bores: 0
Rated Power [kW]: 0,9
Rotation Direction: Clockwise rotation
Voltage [V]: 12

MT-148JM

Starter



AUDI 80 (89, 89Q, 8A, B3)
AUDI 80 (8C, B4)
AUDI 80 Avant (8C, B4)
AUDI 90 (89, 89Q, 8A, B3)
AUDI A4 (8D2, B5)
AUDI A4 (8E2, B6)

OE

068911023P
068911023R
068911023RX
068911023S
068911023SX
068911024B

Clamp: M8
Clamp: Pin "50" 6.3mm Spade
Flange [mm]: 82,5
Number of mounting bores: 2
Number of Teeth: 10
Number of Teeth: 9
Number of Thread Bores: 2
Rated Power [kW]: 1,7
Rotation Direction: Clockwise rotation
Voltage [V]: 12

MT-149JM

Starter



MERCEDES-BENZ CLASSE A (W168)
MERCEDES-BENZ CLASSE A (W169)
MERCEDES-BENZ CLASSE B (W245)
MERCEDES-BENZ Vaneo (414)

OE

0041518501
004151850180
0051212101
0051511101
005151110180
0051512101

Clamp: Pin "50" M6
Flange [mm]: 70
Number of mounting bores: 2
Number of Teeth: 10
Number of Teeth: 9
Number of Thread Bores: 0
Rated Power [kW]: 1,3
Rotation Direction: Clockwise rotation
Voltage [V]: 12

MT-150JM

Starter



FORD MONDEO III (B5Y)
FORD MONDEO III Station wagon (BWY)
FORD MONDEO III Tre volumi (B4Y)
JAGUAR X-TYPE (CF1)
JAGUAR X-TYPE Estate
LTI TX

OE

1096338
1120215
1140110
1151641
1202166
1214371

Clamp: M8, Pin "50" M6
Number of mounting bores: 4
Number of Teeth: 19
Number of Thread Bores: 0
Rated Power [kW]: 2,1
Rotation Direction: Clockwise rotation
Voltage [V]: 12

Electrics

MT-151JM

Starter



ALFA ROMEO MITO (955)
CHRYSLER YPSILON
CITROEN NEMO Station wagon
FIAT 500 (312)
FIAT 500 C (312)
FIAT 500L

OE

1202203
1202266
1202508
1612794380
1616323380
1723350

Clamp: M8 B+
Flange [mm]: 64
Number of mounting bores: 2
Number of Teeth: 10
Number of Thread Bores: 1
Rated Power [kW]: 1,4
Rotation Direction: Clockwise rotation
Voltage [V]: 12

MT-152JM

Starter



DACIA SOLENZA
DACIA SUPERNOVA
MAZDA 2 (DE)
RENAULT 11 (B/C37_)
RENAULT 19 I (B/C53_)
RENAULT 19 I Cabriolet (D53_)

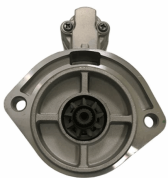
OE

0000431120
0000434120
1059564
1516729R
1516807R
18213M68KA000

Clamp: M8
Flange [mm]: 66
Number of mounting bores: 4
Number of Teeth: 11
Number of Teeth: 9
Number of Thread Bores: 4
Rated Power [kW]: 1,4
Rotation Direction: Clockwise rotation
Voltage [V]: 12

MT-153JM

Starter



NISSAN CABSTAR Pick-up
NISSAN TRADE Autobus
NISSAN TRADE Furgonato
NISSAN TRADE Pianale piatto/Telaio

OE

136914
233000T600
233001S900
2330054T00
2330090067
2330090069

Clamp: M8
Flange [mm]: 95
Number of mounting bores: 2
Number of Teeth: 9
Number of Thread Bores: 0
Rated Power [kW]: 2,2
Rotation Direction: Clockwise rotation
Voltage [V]: 12

MT-154JM

Starter



NISSAN MICRA C+C (K12)
NISSAN MICRA II (K11)
NISSAN MICRA III (K12)
NISSAN NOTE (E11)

OE

233001F710
233001F715
233001F770
233001F771
233001F772
233001F772B

Clamp: M8, Pin "50" M6
Flange [mm]: 70
Number of mounting bores: 2
Number of Teeth: 8
Number of Thread Bores: 1
Rated Power [kW]: 1,1
Rotation Direction: Clockwise rotation
Voltage [V]: 12

MT-155JM

Starter



DACIA DOKKER
DACIA DUSTER
DACIA LODGY
RENAULT CAPTUR
RENAULT CLIO Grandtour IV
RENAULT CLIO IV

OE

2330000Q3D
233000557R
233000779R
233001071
233001071R
233003307R

Clamp: Pin "30" M8 B+
Clamp: Pin "50" M5
Number of mounting bores: 4
Number of Teeth: 11
Number of Thread Bores: 3
Rated Power [kW]: 1
Rotation Direction: Clockwise rotation
Voltage [V]: 12

Electrics

MT-156JM

Starter



SMART CABRIO (450)
 SMART CITY-COUPÉ (450)
 SMART CROSSBLADE (450)
 SMART FORTWO Cabrio (450)
 SMART FORTWO Coupé (450)
 SMART ROADSTER (452)

OE
 0003188V004
 0003188V005
 0003188V006
 0003188V007
 0003188V008
 0003188V008000000

Clamp: M8
 Flange [mm]: 70
 Number of mounting bores: 3
 Number of Teeth: 9
 Number of Thread Bores: 2
 Rated Power [kW]: 0,8
 Rotation Direction: Clockwise rotation
 Voltage [V]: 12

MT-157JM

Starter



MERCEDES-BENZ CLASSE C (W204)
 MERCEDES-BENZ CLASSE C Coupé (C204)
 MERCEDES-BENZ CLASSE C T-Model (S204)
 MERCEDES-BENZ CLASSE E (W212)
 MERCEDES-BENZ CLASSE E Cabriolet (A207)
 MERCEDES-BENZ CLASSE E Coupé (C207)

OE
 0009060126
 000906012680
 0061514501
 006151450180
 6519060026
 651906002680

Clamp: M8 B+
 Clamp: Pin "50" M6
 Flange [mm]: 70
 Number of mounting bores: 2
 Number of Teeth: 12
 Number of Thread Bores: 2
 Rated Power [kW]: 1,7
 Rotation Direction: Clockwise rotation
 Voltage [V]: 12

MT-158JM

Starter



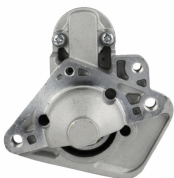
FIAT FIORINO Pick up (146)
 FIAT PALIO (178BX)
 FIAT PALIO Weekend (178DX)
 FIAT PUNTO (176)
 FIAT SIENA (178_)
 FIAT STRADA Pick-up (178E)

OE
 46430721
 46439669
 4643970
 46439700
 46440079
 46446291

Clamp: Pin "50" M6
 Flange [mm]: 82
 Number of mounting bores: 3
 Number of Teeth: 9
 Number of Thread Bores: 3
 Rated Power [kW]: 1,7
 Rotation Direction: Clockwise rotation
 Voltage [V]: 12

MT-159JM

Starter



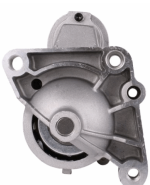
DACIA DOKKER
 DACIA DUSTER
 DACIA LODGY
 DACIA LOGAN II
 DACIA LOGAN MCV II
 DACIA SANDERO II

OE
 2330000Q2H
 233000379R
 233004868C
 233004868R
 233007689R
 233009323R

Clamp: M8 B+
 Clamp: Pin "50" Plug
 Flange [mm]: 64
 Number of mounting bores: 2
 Number of Teeth: 12
 Number of Teeth: 13
 Number of Thread Bores: 2
 Rated Power [kW]: 1,7
 Rotation Direction: Clockwise rotation
 Voltage [V]: 12

MT-160JM

Starter



RENAULT AVANTIME (DE0_)
 RENAULT ESPACE III (JE0_)
 RENAULT ESPACE IV (JK0/1_)
 RENAULT LAGUNA II (BG0/1_)
 RENAULT LAGUNA II Grandtour (KG0/1_)
 RENAULT VEL SATIS (BJ0_)

OE
 1202206
 1202208
 2330000Q0B
 2330000Q0C
 2330000QAF
 2330000QAG

Clamp: M8
 Number of mounting bores: 4
 Number of Teeth: 10
 Number of Thread Bores: 3
 Rated Power [kW]: 2
 Rotation Direction: Clockwise rotation
 Voltage [V]: 12

Electrics

MT-161JM

Starter



PIAGGIO APE (MP) VESPACAR
PIAGGIO APE TM Furgonato
PIAGGIO APE TM Pianale piatto/Telaio

OE

157715
803499
8034993
834692

Number of mounting bores: 2
Number of Thread Bores: 0
Rated Power [kW]: 0,8
Voltage [V]: 12

MT-162JM

Starter



FORD C-MAX II
FORD FOCUS II (DA_)
FORD FOCUS II Station wagon (DA_)
FORD FOCUS II Tre volumi (DA_)
FORD FOCUS III
FORD FOCUS III Tre volumi

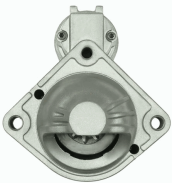
OE

1687623
1715211
1778016
1893556
1898356
2033247

Clamp: Pin "30" M8 B+
Clamp: Pin "50" M6
Number of mounting bores: 3
Number of Teeth: 11
Number of Thread Bores: 0
Rated Power [kW]: 2,3
Rotation Direction: Clockwise rotation
Voltage [V]: 12

MT-163JM

Starter



BMW 1 (E87)
BMW 3 (E46)
BMW 3 Cabriolet (E46)
BMW 3 Compact (E46)
BMW 3 Coupe (E46)
BMW 3 Touring (E46)

OE

12417787354
12417787356
7787354
7787356

Clamp: 30H M5
Clamp: Pin 50 M6
Flange [mm]: 74
Number of mounting bores: 2
Number of Teeth: 10
Number of Thread Bores: 2
Rated Power [kW]: 1,6
Rotation Direction: Clockwise rotation
Voltage [V]: 12

MT-164JM

Starter



CHEVROLET MATIZ (M200, M250)
CHEVROLET SPARK
DAEWOO MATIZ
DAEWOO MATIZ (KLYA)
DAEWOO TICO (KLY3)
SUZUKI WAGON R+ (EM)

OE

3110070B20
3110075F0
3110075F00
3110075F01
3110075F01000
3110075F02

Clamp: M8
Flange [mm]: 75
Number of mounting bores: 2
Number of Teeth: 8
Number of Thread Bores: 2
Rated Power [kW]: 1
Rotation Direction: Clockwise rotation
Voltage [V]: 12

MT-165JM

Starter



SUBARU TREZIA
TOYOTA AURIS (NRE15_, ZZE15_, ADE15_,
ZRE15_, NDE15_)
TOYOTA AURIS (NZE18_, ZRE18_)
TOYOTA AURIS TOURING SPORTS (ADE18_,
ZWE18_, ZRE18_)

OE

281000N040
281000N04084
281000N060
2810033090
2810033110

Clamp: Pin "50" Plug
Flange [mm]: 74
Number of mounting bores: 2
Number of Teeth: 9
Number of Thread Bores: 1
Rated Power [kW]: 1,6
Rotation Direction: Clockwise rotation
Voltage [V]: 12

Electrics

MT-166JM

Starter



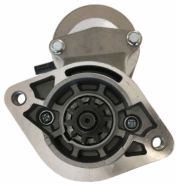
AUDI A6 (4B2, C5)
DAEWOO MATIZ (KLYA)
JAGUAR XJ (X350, X358)
NEW HOLLAND TN-A
TOYOTA LAND CRUISER (KDJ12_, GRJ12_)

OE
580 144 18 16
5801441816

Clamp: M8 B+
Flange [mm]: 110
Number of mounting bores: 3
Number of Teeth: 9
Number of Thread Bores: 0
Rated Power [kW]: 2,6
Rotation Direction: Clockwise rotation
Voltage [V]: 12

MT-167JM

Starter



TOYOTA AVENSIS VERSO (_CLM2_, _ACM2_)
TOYOTA CARINA E (_T19_)
TOYOTA CARINA E Sportswagon (_T19_)
TOYOTA CARINA E Tre volumi (_T19_)
TOYOTA COROLLA (_E11_)
TOYOTA COROLLA Compact (_E11_)

OE
2810064140
2810064310
2810064430
TT15639

Clamp: M8
Flange [mm]: 74
Number of mounting bores: 2
Number of Teeth: 10
Number of Thread Bores: 2
Rated Power [kW]: 2,2
Rotation Direction: Clockwise rotation
Voltage [V]: 12

MT-168JM

Starter



FIAT BRAVA (182)
FIAT BRAVO I (182)
FIAT DOBLO (119)
FIAT MAREA (185)
FIAT MAREA Weekend (185)
FIAT MULTIPLA (186)

OE
361002B402
46231536
46451529
46524472
46531437
46748349

Clamp: M8, Pin "50" M6
Flange [mm]: 63,5
Number of mounting bores: 3
Number of Teeth: 9
Number of Thread Bores: 3
Rated Power [kW]: 1,3
Rotation Direction: Clockwise rotation
Voltage [V]: 12

MT-169JM

Starter



BMW 1 (E81)
BMW 1 (E87)
BMW 1 (F20)
BMW 1 (F21)
BMW 1 Cabriolet (E88)
BMW 1 Coupé (E82)

OE
12417798006
12417801203
12417802508
12417804138
12417804140
12417811601

Clamp: Pin "30" M8 B+
Clamp: Pin "50" M6
Flange [mm]: 69
Number of mounting bores: 3
Number of Teeth: 11
Number of Thread Bores: 0
Rated Power [kW]: 2,2
Rotation Direction: Clockwise rotation
Voltage [V]: 12

MT-170JM

Starter



AUDI A3 (8P1)
AUDI A3 Cabriolet (8P7)
AUDI A3 Sportback (8PA)
AUDI TT (8J3)
AUDI TT (8N3)
AUDI TT Roadster (8J9)

OE
02E911023H
02E911023HX
02E911023L
02E911023LX
2E911023H
2E911023HX

Clamp: Pin "50" Plug
Flange [mm]: 76
Number of mounting bores: 2
Number of Teeth: 11
Number of Thread Bores: 0
Rated Power [kW]: 2
Rotation Direction: Anti-clockwise rotation
Voltage [V]: 12

Electrics

MT-171JM

Starter



DACIA LOGAN (LS_)
 DACIA LOGAN Pick-up (US_)
 DACIA SANDERO
 NISSAN ALMERA II (N16)
 NISSAN ALMERA II Hatchback (N16)
 NISSAN MICRA III (K12)

OE

2330000Q0G
 2330000Q0H
 2330000QAB
 2330000QAW
 2330000QAZ
 2330000QUA

Clamp: M8
 Flange [mm]: 65
 Number of mounting bores: 3
 Number of Teeth: 12
 Number of Thread Bores: 2
 Rated Power [kW]: 1,4
 Rotation Direction: Clockwise rotation
 Voltage [V]: 12

MT-172JM

Starter



BMW 1 Cabriolet (E88)
 HYUNDAI ACCENT III (MC)
 HYUNDAI ACCENT III Tre volumi (MC)
 HYUNDAI ACCENT IV Tre volumi (RB)
 HYUNDAI ELANTRA Tre volumi (MD, UD)
 HYUNDAI GETZ (TB)

OE

361002A000
 361002A100
 361002A300
 TT16345
 TT16345PRO

Clamp: M8 B+
 Clamp: Pin "50" Plug
 Flange [mm]: 77
 Number of mounting bores: 2
 Number of Teeth: 8
 Number of Thread Bores: 2
 Rated Power [kW]: 1,7
 Rotation Direction: Clockwise rotation
 Voltage [V]: 12

MT-173JM

Starter



BMW 1 (E81)
 BMW 1 (E87)
 BMW 3 (E46)
 BMW 3 (E90)
 BMW 3 Cabriolet (E46)
 BMW 3 Cabriolet (E93)

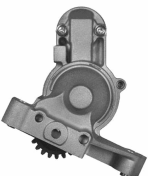
OE

12417794952
 12417796892
 12417798035
 12417798036
 7794952
 7796892

Clamp: Pin "30" M8 B+
 Clamp: Pin "50" M6
 Flange [mm]: 74
 Number of mounting bores: 2
 Number of Teeth: 9
 Number of Thread Bores: 2
 Rated Power [kW]: 1,8
 Rotation Direction: Clockwise rotation
 Voltage [V]: 12

MT-174JM

Starter



CHRYSLER SEBRING (JS)
 CHRYSLER SEBRING Cabriolet (JS)
 DODGE AVENGER
 DODGE CALIBER
 DODGE JOURNEY
 JEEP COMPASS (MK49)

OE

050033440AC
 05033440AA
 05033440AC
 1810A062
 1810A143
 5033440AA

Clamp: M8 B+
 Number of mounting bores: 3
 Number of Teeth: 22
 Number of Thread Bores: 0
 Rated Power [kW]: 2
 Rotation Direction: Anti-clockwise rotation
 Voltage [V]: 12

MT-175JM

Starter



METROCAB Taxi
 TOYOTA CROWN Tre volumi (_S1_)
 TOYOTA HILUX Fuoristrada chiuso (ZN13_, LN9_,
 RN1_, YN8_,
 TOYOTA HILUX II Pick-up (RN6_, RN5_, LN6_,
 YN6_, YN5_, LN

OE

1516979R
 2810005030
 2810054070
 2810054080
 2810054100
 2810054110

Clamp: M8
 Flange [mm]: 82,5
 Number of mounting bores: 2
 Number of Teeth: 10
 Number of Teeth: 11
 Number of Thread Bores: 1
 Rated Power [kW]: 2
 Rotation Direction: Clockwise rotation
 Voltage [V]: 12

Electrics

MT-176JM

Starter



CHEVROLET AVEO 2 volumi /Coda spiovente (T200)
 CHEVROLET AVEO 2 volumi /Coda spiovente (T250, T255)
 CHEVROLET AVEO 2 volumi /Coda spiovente (T300)

OE

25187951
 63522629
 96289430
 96469962
 96497702
 96943429

Clamp: M8
 Flange [mm]: 75
 Number of mounting bores: 2
 Number of Teeth: 8
 Number of Thread Bores: 1
 Position / Degree: 30
 Rated Power [kW]: 0,8
 Rotation Direction: Clockwise rotation
 Voltage [V]: 12

MT-177JM

Starter



DACIA DOKKER
 DACIA DUSTER
 DACIA LODGY
 DACIA LOGAN (LS_)
 DACIA LOGAN II
 DACIA LOGAN MCV (KS_)

OE

2330000QAA
 233001105R
 6025008446
 7700104674
 7700105119
 7711134530

Clamp: M8
 Flange [mm]: 65
 Number of mounting bores: 3
 Number of Teeth: 8
 Number of Teeth: 9
 Number of Thread Bores: 3
 Rated Power [kW]: 1
 Rotation Direction: Clockwise rotation
 Voltage [V]: 12

MT-178JM

Starter



AUDI A1 (8X1, 8XF)
 AUDI A1 Sportback (8XA, 8XK)
 AUDI A3 (8P1)
 AUDI A3 Sportback (8PA)
 SEAT ALTEA (5P1)
 SEAT ALTEA XL (5P5, 5P8)

OE

02T911023R
 02T911023RX
 02T911023S
 02T911023SX
 02T911024A
 02T911024AX

Clamp: M8 B+
 Clamp: Pin "50" Plug
 Flange [mm]: 76
 Number of mounting bores: 2
 Number of Teeth: 10
 Number of Teeth: 9
 Number of Thread Bores: 0
 Rated Power [kW]: 1
 Rotation Direction: Anti-clockwise rotation
 Voltage [V]: 12

MT-179JM

Starter



FIAT SEDICI
 SUBARU JUSTY III (G3X)
 SUZUKI GRAND VITARA II (JT)
 SUZUKI IGNIS (FH)
 SUZUKI IGNIS II
 SUZUKI JIMNY (FJ)

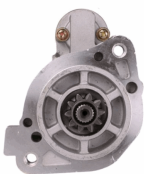
OE

3110063J00
 3110063J10
 3110075F60
 3110080G0
 3110080G00
 3110080G1

Clamp: Pin "30" M8 B+
 Clamp: Pin "50" 6.4mm Plug
 Flange [mm]: 70
 Number of mounting bores: 2
 Number of Teeth: 8
 Number of Thread Bores: 2
 Rated Power [kW]: 1
 Rotation Direction: Clockwise rotation
 Voltage [V]: 12

MT-180JM

Starter



MITSUBISHI PAJERO II (V3_W)
 MITSUBISHI PAJERO II (V3_W, V2_W, V4_W)
 MITSUBISHI PAJERO III (V7_W, V6_W)
 MITSUBISHI PAJERO III Fuoristrada aperto (V6_W, V7_W)
 MITSUBISHI PAJERO IV (V8_W, V9_W)

OE

009154720280
 1516512R
 1810A050
 1810A050R
 A009154720280
 M002T63271

Clamp: M8
 Flange [mm]: 77
 Number of mounting bores: 2
 Number of Teeth: 10
 Number of Thread Bores: 2
 Rated Power [kW]: 2,2
 Rotation Direction: Clockwise rotation
 Voltage [V]: 12

Electrics

MT-181JM

Starter



DAIHATSU HIJET Furgonato (S85)
DAIHATSU HIJET Pick-up
PIAGGIO PORTER Autobus
PIAGGIO PORTER Furgonato
PIAGGIO PORTER Pianale piatto/Telaio

OE
2280005711
2810087548
2810087551
2810087551000

Clamp: M8
Flange [mm]: 74
Number of mounting bores: 2
Number of Teeth: 8
Number of Thread Bores: 0
Rated Power [kW]: 0,8
Rotation Direction: Clockwise rotation
Voltage [V]: 12

MT-182JM

Starter



RENAULT KANGOO (KC0/1_)
RENAULT MEGANE I (BA0/1_)
RENAULT MEGANE I Classic (LA0/1_)
RENAULT MEGANE I Coach (DA0/1_)
RENAULT MEGANE I Grandtour (KA0/1_)
RENAULT MEGANE Scenic (JA0/1_)

OE
6001545511
7700113267
7700113627
7700116282
7711134297
7711134790

Clamp: M8
Flange [mm]: 65
Number of mounting bores: 3
Number of Teeth: 12
Number of Thread Bores: 3
Rated Power [kW]: 1,7
Rotation Direction: Clockwise rotation
Voltage [V]: 12

MT-183JM

Starter



FORD TRANSIT Autobus (E_ _)
FORD TRANSIT Autobus (V_ _)
FORD TRANSIT Furgonato (E_ _)
FORD TRANSIT Furgonato (T_ _)
FORD TRANSIT Furgonato (V_ _)
FORD TRANSIT Pianale piatto/Telaio (E_ _)

OE
1008823
1024508
1027928
1059179
1073108
1093471

Clamp: M8, Pin "50" M6
Flange [mm]: 92
Number of mounting bores: 3
Number of Teeth: 13
Number of Thread Bores: 0
Rated Power [kW]: 2,3
Rotation Direction: Clockwise rotation
Voltage [V]: 12

MT-184JM

Starter



AUDI A3 (8P1)
AUDI A3 Cabriolet (8P7)
AUDI A3 Sportback (8PA)
SEAT ALTEA (5P1)
SEAT ALTEA XL (5P5, 5P8)
SEAT IBIZA V (6J5, 6P5)

OE
0AH911023
0AH911023A
0AH911023AX
0AH911023D
0AH911023DX
0AH911023K

Clamp: M8
Flange [mm]: 76
Number of mounting bores: 3
Number of Teeth: 10
Number of Thread Bores: 0
Rated Power [kW]: 1,1
Rotation Direction: Anti-clockwise rotation
Voltage [V]: 12

MT-185JM

Starter



AUDI A4 (8EC, B7)
AUDI A4 Avant (8ED, B7)
AUDI A4 Cabriolet (8H7, B6, 8HE, B7)
AUDI A6 (4F2, C6)
AUDI A6 Avant (4F5, C6)
SEAT EXEO (3R2)

OE
03G911023
03G911023X
TT15338PRO

Clamp: M8 B+
Flange [mm]: 82
Number of mounting bores: 2
Number of Teeth: 9
Number of Thread Bores: 0
Rated Power [kW]: 2
Rotation Direction: Clockwise rotation
Voltage [V]: 12

Electrics

MT-186JM

Starter



AUDI A1 (8X1, 8XF)
 AUDI A1 Sportback (8XA, 8XK)
 AUDI A3 (8P1)
 AUDI A3 Cabriolet (8P7)
 AUDI A3 Sportback (8PA)
 SEAT ALTEA (5P1)

OE

02N911023N
 02Z911023M
 02Z911023MX
 02Z911023N
 02Z911023NX
 02Z911023P

Clamp: M8 B+
 Flange [mm]: 76
 Number of mounting bores: 3
 Number of Teeth: 11
 Number of Teeth: 12
 Number of Thread Bores: 0
 Rated Power [kW]: 1,7
 Rotation Direction: Clockwise rotation
 Voltage [V]: 12

MT-187JM

Starter



NISSAN NAVARA (D40)
 NISSAN PATHFINDER (R51)

OE

23300EB300
 23300EB30A
 23300EB30B
 23300EB30REX
 23300EB71B
 23300EB71E

Clamp: Pin "30" M8 B+
 Clamp: Pin "50" M5
 Flange [mm]: 70
 Number of mounting bores: 2
 Number of Teeth: 11
 Number of Teeth: 12
 Number of Thread Bores: 2
 Rated Power [kW]: 2
 Rotation Direction: Clockwise rotation
 Voltage [V]: 12

MT-188JM

Starter



CITROEN AX (ZA-)
 CITROEN BERLINGO (B9)
 CITROEN BERLINGO (MF)
 CITROEN BX (XB-)
 CITROEN BX Break (XB-)
 CITROEN C-ELYSEE

OE

1516758R
 3960404
 534054A
 534054B
 534054C
 534054D

Clamp: M8
 Clamp: Pin "50" 6.4mm Plug
 Number of mounting bores: 3
 Number of Teeth: 10
 Number of Teeth: 9
 Number of Thread Bores: 1
 Rated Power [kW]: 0,9
 Rotation Direction: Clockwise rotation
 Voltage [V]: 12