

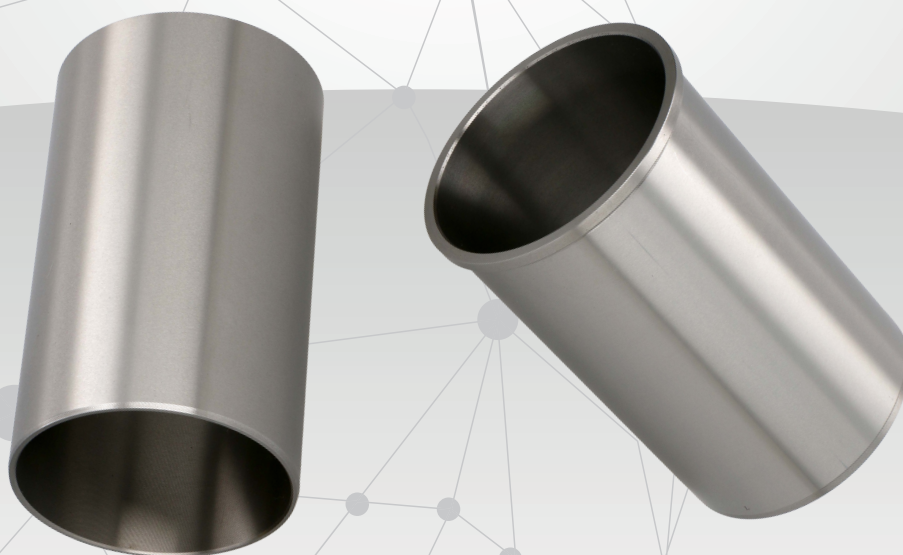


ashika[®]

CYLINDER LINER KITS **KIT CANNE CILINDRO MOTORE**

*FULL RANGE FOR EUROPEAN , ASIAN
and AMERICAN VEHICLES*

*GAMMA COMPLETA PER IL CIRCOLANTE
EUROPEO, ASIATICO E AMERICANO*



ashika.eu

19MI000**ME203223**

MITSUBISHI L 300 Furgonato (P0_W,
P1_W) 2.8 D
MITSUBISHI PAJERO II (V3_W, V2_W,
V4_W) 2.8 TD (V46W)

19NI002

NISSAN PATROL GR I (Y60, GR) 2.8 TD
(Y60A)
NISSAN PATROL Hardtop (K260) 2.8 TD
NISSAN PATROL Station Wagon (W260)
2.8 TD

19TO002**11461-54010**

TOYOTA CRESSIDA Station Wagon (X6K,
MX62) 2.2 D
TOYOTA CRESSIDA Tre volumi (_X6_)
2.2 D (LX60)
TOYOTA CROWN Tre volumi (_S1_) 2.2 D
(LS110_)
TOYOTA HIACE I Furgonato (RH1_,
LH3_, RH3_, RH2_, LH2_, L 2.2 D
(LH20-30)

19DA001**11461-87305**

DAIHATSU ROCKY Hard Top (F7, F8) 2.8
D
DAIHATSU ROCKY Hard Top (F7, F8) 2.8
TD
DAIHATSU ROCKY Soft Top (F7, F8) 2.8
D
DAIHATSU ROCKY Soft Top (F7, F8) 2.8
TD
DAIHATSU TAFT 2.8 D 4x4 (F60, F65)

19NI006**11012-2S000**

NISSAN PICK UP (D21) 2.7 D 4WD
NISSAN TERRANO I (WD21) 2.7 TD 4WD
NISSAN TERRANO II (R20) 2.7 D
NISSAN TERRANO II (R20) 2.7 TD 4WD

19NI001**11012-76201**

NISSAN PATROL Hardtop (K160) 3.2 TD
(K160)
NISSAN PATROL Hardtop (K160) 3.3 D
(K160)
NISSAN PATROL Station Wagon (W160)
3.2 TD (W160)
NISSAN PATROL Station Wagon (W160)
3.3 D (W160)

CA500**MD103648**

GASOLONE GASOLONE 35 2.5 D
HYUNDAI GALLOPER II (JK-01) 2.5 TD
intercooler
HYUNDAI H-1 Furgonato 2.5 TD
HYUNDAI H-1/H-200/SATELLITE Autobus
2.5 D
HYUNDAI H-1/H-200/SATELLITE Autobus
2.5 TD
HYUNDAI H100 Autobus (P) 2.5 D