

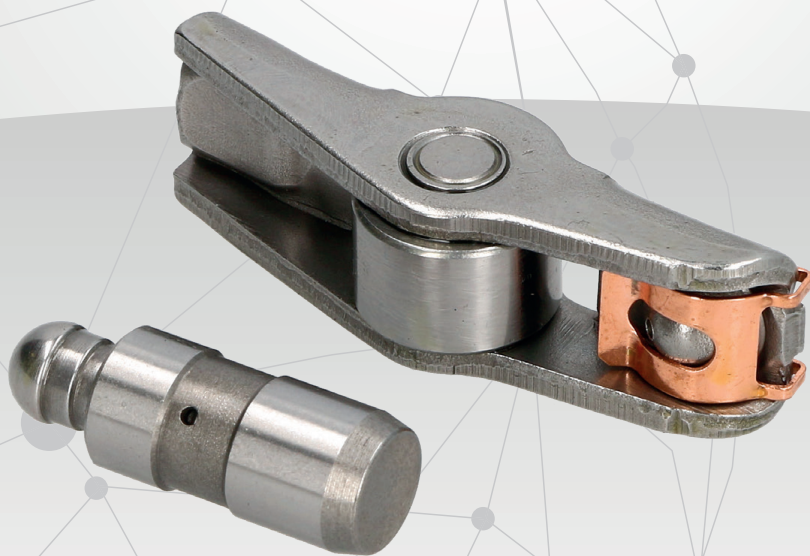


ashika®

BALANCES VALVES BILANCIERI VALVOLE

*FULL RANGE FOR EUROPEAN , ASIAN
and AMERICAN VEHICLES*

*GAMMA COMPLETA PER IL CIRCOLANTE
EUROPEO, ASIATICO E AMERICANO*



ashika.eu

BALANCE VALVES

BILANCERI VALVOLE

ashika

17CH000

05066780AA



CHRYSLER VOYAGER III (GS) 2.5 TD
CHRYSLER VOYAGER IV (RG, RS) 2.5 CRD
CHRYSLER VOYAGER IV (RG, RS) 2.8 CRD
JEEP CHEROKEE (KJ) 2.5 CRD
JEEP CHEROKEE (KJ) 2.8 CRD
JEEP CHEROKEE (XJ) 2.5 TD
LDV MAXUS Autobus 2.5 CDi

17DW000

4814154



CHEVROLET CAPTIVA (C100, C140) 2.0 D
CHEVROLET CAPTIVA (C100, C140) 2.0 D 4WD
CHEVROLET CRUZE (J300) 2.0 CDI
CHEVROLET CRUZE 2 volumi /Coda spiovente (J305) 2.0 CDI
CHEVROLET EPICA (KL1_) 2.0 D
CHEVROLET LACETTI (J200) 2.0 D

17DW001

4814153



CHEVROLET CAPTIVA (C100, C140) 2.0 D
CHEVROLET CAPTIVA (C100, C140) 2.0 D 4WD
CHEVROLET CRUZE (J300) 2.0 CDI
CHEVROLET CRUZE 2 volumi /Coda spiovente (J305) 2.0 CDI
CHEVROLET EPICA (KL1_) 2.0 D
CHEVROLET LACETTI (J200) 2.0 D

17DW002

128S1A60C00



CHEVROLET KALOS 1.2
CHEVROLET KALOS Tre volumi 1.2
CHEVROLET MATIZ (M200, M250) 1.0

17HY000

0K55112130



HYUNDAI TERRACAN (HP) 2.9 CRDi
KIA CARNIVAL I (UP) 2.9 TD
KIA CARNIVAL II (GQ) 2.9 CRDi

17HY001

24170-27001



HYUNDAI SANTA FÉ I (SM) 2.0 CRDi
HYUNDAI SANTA FÉ I (SM) 2.0 CRDi 4x4

17HY002

24180-27000



HYUNDAI ELANTRA (XD) 2.0 CRDi
HYUNDAI ELANTRA Tre volumi (XD) 2.0 CRDi
HYUNDAI i30 (FD) 2.0 CRDi
HYUNDAI SANTA FÉ I (SM) 2.0 CRDi
HYUNDAI SANTA FÉ I (SM) 2.0 CRDi 4x4
HYUNDAI SANTA FÉ II (CM) 2.2 CRDi
HYUNDAI SANTA FÉ II (CM) 2.2 CRDi 4x4

17HY003

24170-2A100



HYUNDAI ACCENT III (MC) 1.5 CRDi GLS
HYUNDAI ACCENT III Tre volumi (MC) 1.5 CRDi GLS
HYUNDAI ACCENT IV (RB) 1.6 CRDi
HYUNDAI ACCENT IV Tre volumi (RB) 1.6 CRDi
HYUNDAI GETZ (TB) 1.5 CRDi
HYUNDAI GETZ (TB) 1.5 CRDi GLS
HYUNDAI i10 (PA) 1.1 CRDi

17IS000

90234847



OPEL ASTRA F (56_, 57_) 1.7 TDS
OPEL ASTRA F 2 volumi /Coda spiovente (53_, 54_, 58_, 5) 1.7 TDS
OPEL ASTRA F Station wagon (51_, 52_) 1.7 TDS
OPEL CORSA A 2 volumi /Coda spiovente (93_, 94_, 98_, 9) 1.5 D
OPEL CORSA A 2 volumi /Coda spiovente (93_, 94_, 98_, 9) 1.5 TD

17KI000

241704A010



HYUNDAI H-1 Furgonato 2.5 CRDi
KIA SORENTO I (JC) 2.5 CRDi

17KI001

241804A010



HYUNDAI H-1 Furgonato 2.5 CRDi
KIA SORENTO I (JC) 2.5 CRDi

17KI002

2455103000



HYUNDAI i10 (PA) 1.2
HYUNDAI i20 (PB, PBT) 1.2
KIA RIO III (UB) 1.25 CVVT
KIA RIO III Tre volumi (UB) 1.25 CVVT

BALANCE VALVES

BILANCERI VALVOLE

ashika

17MI000

MD050105



GASOLONE GASOLONE 35 2.5 D
HYUNDAI H-1/H-200/SATELLITE Autobus 2.5 D
HYUNDAI H100 Autobus (P) 2.5 D
HYUNDAI H100 Furgonato 2.5 D
MITSUBISHI GALANT II (A16_) 2.3 Turbo-D (A167)
MITSUBISHI GALANT II Station Wagon (A16_V) 2.3 Turbo-D (A167V)

17MI001

MD050106



GASOLONE GASOLONE 35 2.5 D
HYUNDAI H-1/H-200/SATELLITE Autobus 2.5 D
HYUNDAI H100 Autobus (P) 2.5 D
HYUNDAI H100 Furgonato 2.5 D
MITSUBISHI GALANT II (A16_) 2.3 Turbo-D (A167)
MITSUBISHI GALANT II Station Wagon (A16_V) 2.3 Turbo-D (A167V)

17MI002

MD352127



HYUNDAI GALLOPER II (JK-01) 2.5 TD intercooler
HYUNDAI H-1 Furgonato 2.5 TD
HYUNDAI H-1/H-200/SATELLITE Autobus 2.5 TD
HYUNDAI H100 Autobus (P) 2.5 TD
HYUNDAI TERRACAN (HP) 2.5 D
MITSUBISHI L 200 (K3_T, K2_T, K1_T, K0_T) 2.5 D (K14T)

17MI003

MD352128



HYUNDAI GALLOPER II (JK-01) 2.5 TCi D
HYUNDAI GALLOPER II (JK-01) 2.5 TD intercooler
HYUNDAI H-1 / STAREX 2.5 TCi
HYUNDAI H-1 Furgonato 2.5 TD
HYUNDAI H-1/H-200/SATELLITE Autobus 2.5 TD
HYUNDAI PORTER Autobus 2.5 TD

17MI004

1025A091



MITSUBISHI L 200 (K7_T, K6_T) 2.5 DI-D
MITSUBISHI L 200 (KB_T, KA_T) 2.5 DI-D
MITSUBISHI L 200 (KB_T, KA_T) 2.5 DI-D 4x4 (KB4T)
MITSUBISHI L 200 (KB_T, KA_T) 2.5 DiD [RWD]

17NI000

1325700Q0A



NISSAN NV400 Autobus 2.3 dCi
NISSAN NV400 Furgonato 2.3 dCi
NISSAN NV400 Furgonato 2.3 dCi [RWD]
NISSAN NV400 Pianale piatto/Telaio 2.3 dCi
NISSAN NV400 Pianale piatto/Telaio 2.3 dCi [RWD]
NISSAN PRIMASTAR Autobus (X83) dCi 120

17SZ000

12841-73002



BEDFORD RASCAL Autobus 1.0
BEDFORD RASCAL Furgonato 1.0
SUZUKI CARRY Furgonato (ST90V) 0.8
SUZUKI LJ 80 0.8
SUZUKI SAMURAI (SJ) 1.0 (SJ 410)
SUZUKI SANTANA 1.0 (SJ410) F10A
SUZUKI SANTANA 1.0 (SJ410) F10A
MADE IN SPAIN

17SZ001

12841-60A01



SUZUKI SAMURAI (SJ) 1.3 (SJ 413)
SUZUKI SANTANA 1.3 (SJ413)
SUZUKI SJ 413 1.3
SUZUKI SWIFT I (AA) 1.3 (SA413, AA51)
SUZUKI SWIFT I (AA) 1.3 (SA413, AA51/53)
SUZUKI SWIFT I (AA) 1.3 (SA413, AA53)
SUZUKI SWIFT II 2 volumi /Coda spiovente (EA, MA) 1.3 (SF413, AB35)

17SZ002

73501138



FIAT 500 (312) 1.3 D Multijet (312AXB1A)
FIAT DOBLO Cargo (223) 1.3 JTD 16V
FIAT GRANDE PUNTO (199) 1.3 D Multijet
FIAT IDEA 1.3 JTD
FIAT PANDA (169) 1.3 D Multijet
FIAT PANDA (169) 1.3 D Multijet 4x4
FIAT PUNTO (188) 1.3 JTD 16V

17TY002

Y401-12-130



CITROEN C1 (PM_, PN_) 1.4 HDi
CITROEN C2 (JM_) 1.4 HDi
CITROEN C3 I (FC_) 1.4 HDi
CITROEN C3 II 1.4 HDi
CITROEN C3 II 1.6 HDi
CITROEN DS3 1.6 HDi
MAZDA 2 (DE) 1.4 MZR-CD
MAZDA 2 (DY) 1.4 CD